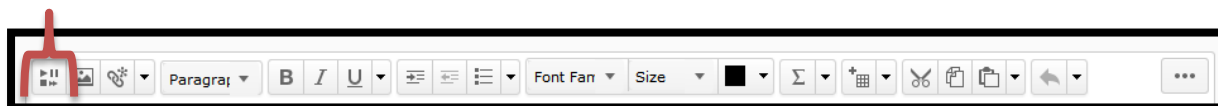


# The Page Tool: Adding YouTube Videos

This document outlines how to add YouTube videos that play on the page

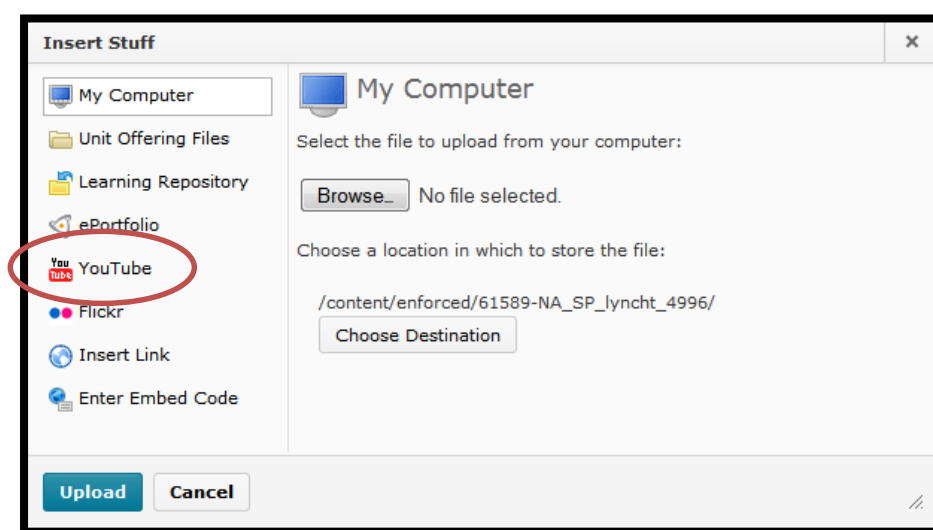
The D2L Text Editor appears in a number of places in D2L, generally being anywhere that you would type text onto the page such as discussion posts, news items, HTML pages, etc. You can add YouTube clips that play on the page using these instructions.



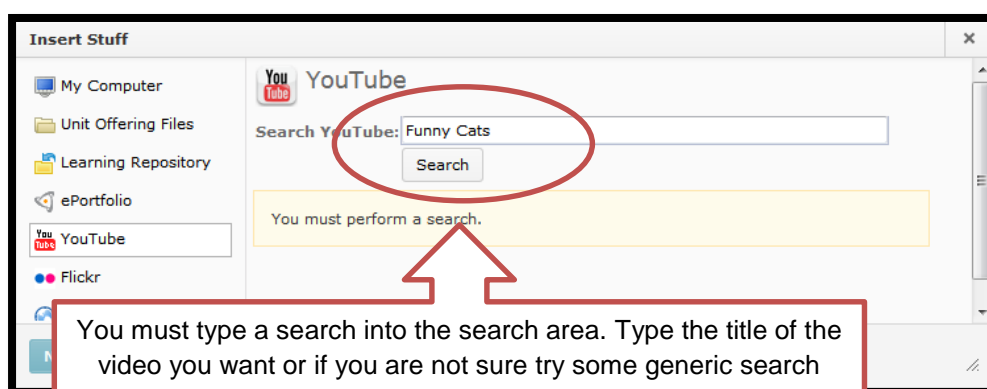
The button for adding media to pages is the very first button on the list helpfully called 'Insert Stuff'.



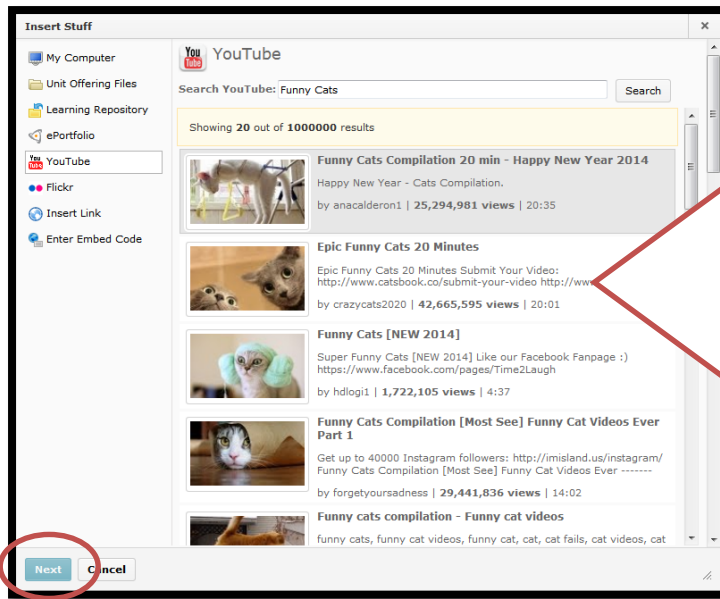
When you click on that button you will see the screen below:



Click the 'YouTube' link as circled above.



## YouTube Videos

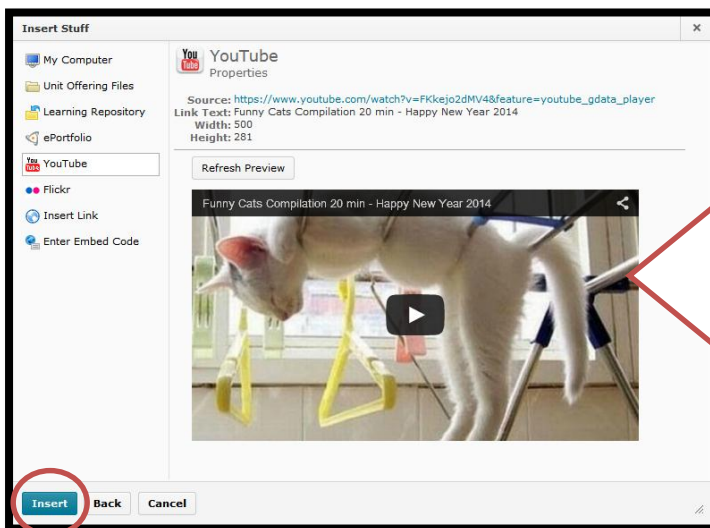


Your search results will be listed out below. Scroll through the list to find the one you want.

If it is not there, try a different search term (search bar at top).

Some videos such as ones listed as 'unlisted' will not appear so follow the instructions for embedding video if you found it on YouTube but cannot find it here.

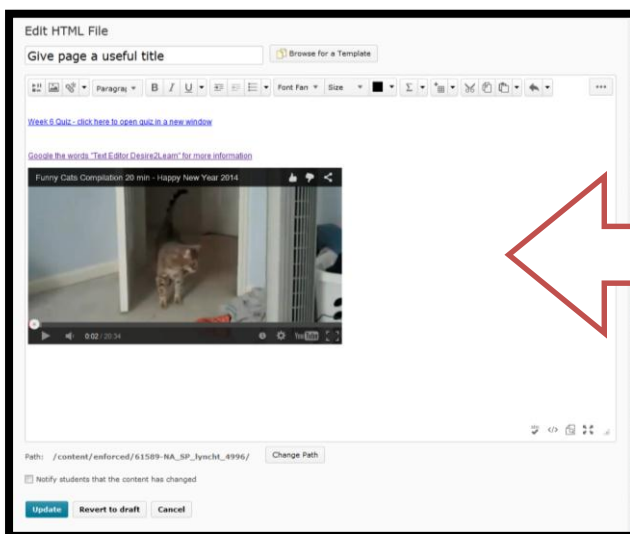
To Select a video – click on the video and then click the blue 'Next' button as circled in the screenshot.



The next window you'll see will show you a preview of the video. You can play the video here to check that it is the correct one.

If you want to choose another click the 'Back' button at the bottom of the window.

If it is correct click the 'Insert' button as circled.



The video will appear on the page as follows with the usual YouTube video controls.

You can delete by just selecting then pressing delete on the keyboard (same as you would deleting text) or you can add more videos and other media.