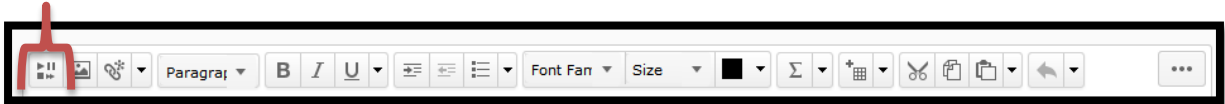


The Page Tool: Embed Media from Sites

This document outlines how to add other media using embed code — not too scary trust me!

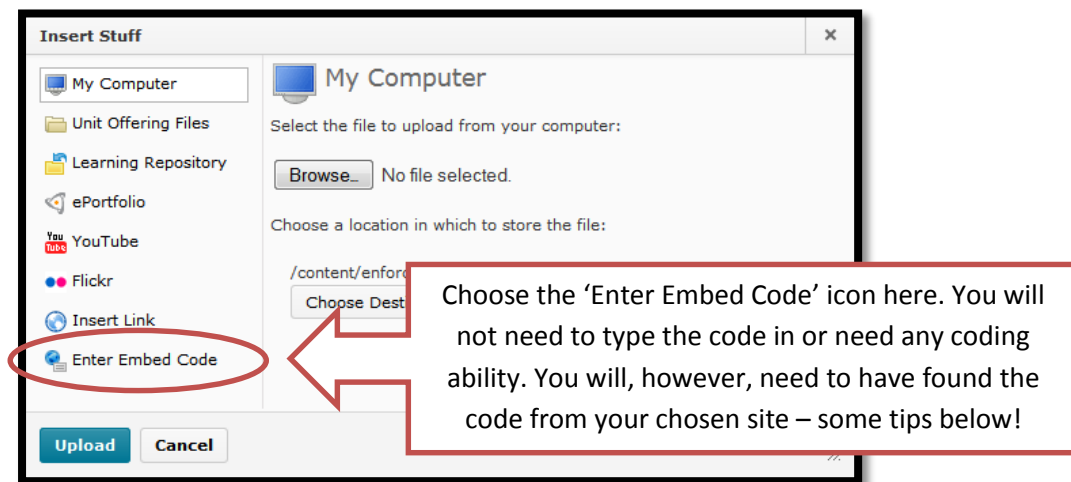
The D2L Text Editor appears in a number of places in D2L, generally being anywhere that you would type text onto the page such as discussion posts, news items, HTML pages, etc. You can add media from websites that allow you to embed their media into pages, like soundcloud or blip.tv.



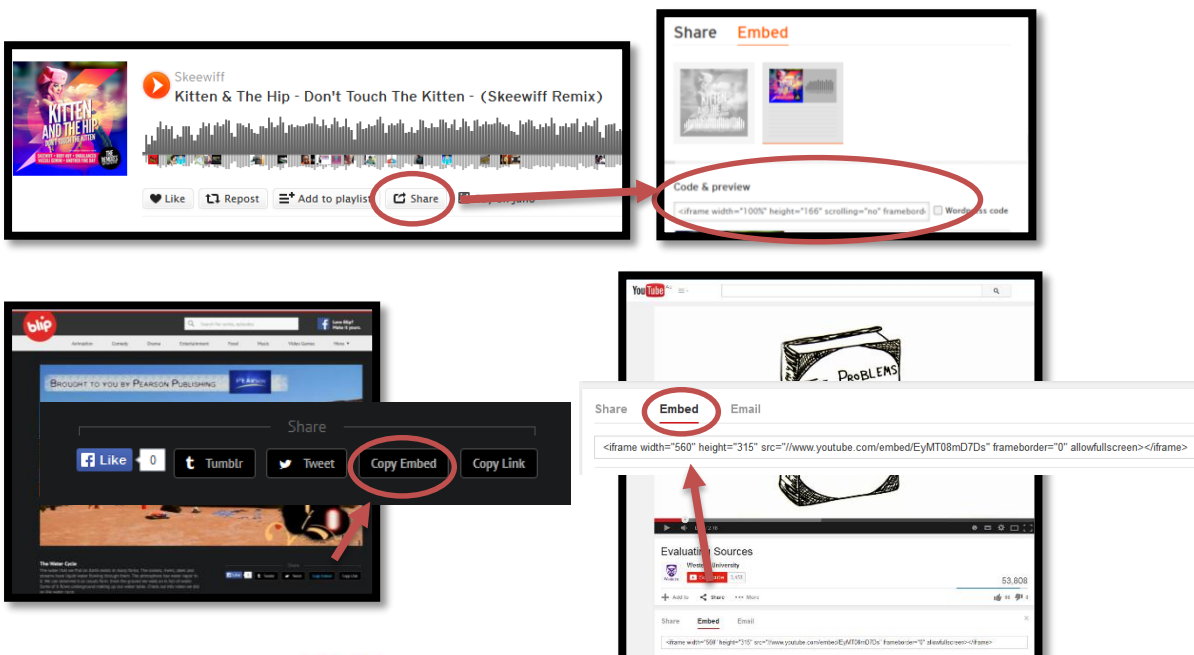
The button for adding media to pages is the very first button on the list helpfully called 'Insert Stuff'.



When you click on that button you will see the screen below:



Finding the embed code for a piece of media is usually simple. Most sites that stream media will have either a 'Share' button or an 'Embed' button. The button will either copy the code to your clipboard or you can copy the code from a small window – examples below.



Embed Media

When you click the 'Enter Embed Code' option you will see the following window:

All you have to do is copy the code from the media item you found and paste it into the box as shown.

Click the blue 'Next' button to continue.

The next window gives you a playable preview of the item and if it plays it means the code works.

If there is any error you will be told and you can try copy/pasting the code again or find another code.

Click 'Insert' when done.

Your media is placed on the page.

Please note the player style, the buttons and any visuals shown are dependent on the service providing the media.

The example to the right is a sound file but the service provides visuals also. Don't forget to save your page when you're done editing!